

TaHoma® switch

The **TaHoma® switch** brings connectivity and advanced control to Somfy-powered shades. This hub can control up to 50 Somfy Zigbee products and 40 channels of Radio Technology Somfy® (RTS) motorized products. The TaHoma® app enables users to setup and configure their products, and access their smart shading from anywhere. TaHoma also enables integration with third-party control systems by leveraging the Somfy Synergy™ API.

- Enables third-party integration
- Create scenes and schedules for automated control
- Quickly launch scenes directly from the device or using the app
- Allows voice control with Amazon Alexa, Google Home, and Apple HomeKit (where applicable)
- Centralized control via an app
- Supports both Zigbee and RTS Somfy products



TaHoma® 3.0
by Somfy app

The TaHoma app allows you to stay connected to your home from your smartphone or tablet.

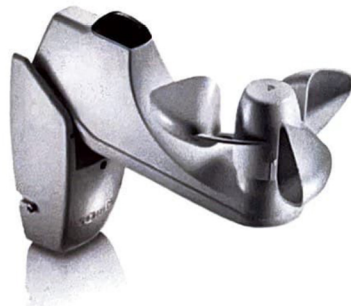


Discover more about
TaHoma® switch

Item #: 1871038

Soliris RTS Sun & Wind Sensor

- Automatically operates awnings or exterior screens when wind is detected or the sun's intensity increases.
- Reduce energy consumption up to 40%.
- State-of-the-art sensor automatically offers maximum energy savings and protects the application.



Item #: 9101475



Hz Mobile Transmitter 1 & 5 Channel

SIMU's **Hz remote control range** combines the SIMU-Hz radio system and a modern design.

The design offers pure lines and round angles making them fit easily with all types of architecture and decor.



Item #: 2008805

Item #: 2008806



Item #: 1810897



Item #: 1810813

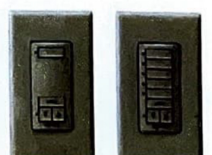
DecoFlex WireFree™ RTS

The **DecoFlex WireFree™ RTS** battery powered wall switch features Radio Technology Somfy® (RTS) and may be personalized for intuitive control of window coverings. The switch is available in both one and five-channel button versions. It can be easily converted to a two, three, or four-channel button switch. The channel options allow users to control multiple window coverings independently or in groups.

Also available:



Black



Ivory